



P-808®

808NM DIODE LASER HAIR
REMOVAL SYSTEM

CONTENTS

1

P-808 perspective

2

Theory

3

Operator interface

4

Technical Advantages

5

System Applications

6

System advantages

P-808 perspective



Super cooling

Sapphire Cooling 0-5°C

Professional

Micro channel technology

High

power Germany bar

Huge

12*12mm / 12*23mm spot size

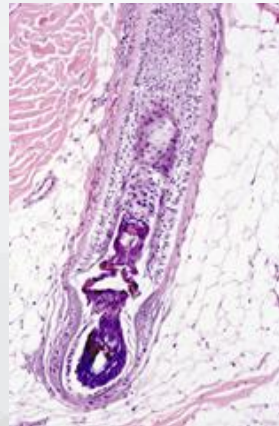
HANDPIECE



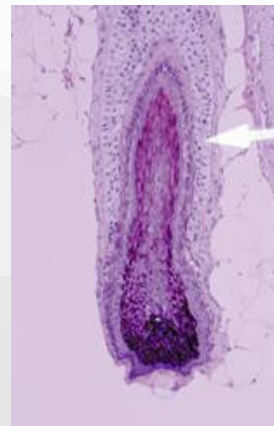
- Modern Design
- Stable output
- Short time irradiation
- Permanent effect
- Easy to control
- Excellent clinical effect
- High security

Theory

- P-808 System, use special laser with long Pulse-Width 808nm, can penetrate to hair follicle .
- Using selective light absorption theorylaser can be preferentially absorbed by heating the hair shaft and hair follicle, moreover to destroy the hair follicle and oxygen organization around hair follicle.
- When laser outputs, system with special cooling technology, cool the skin and protect skin from beinghurt and reach a very safe and comfortable treatment.

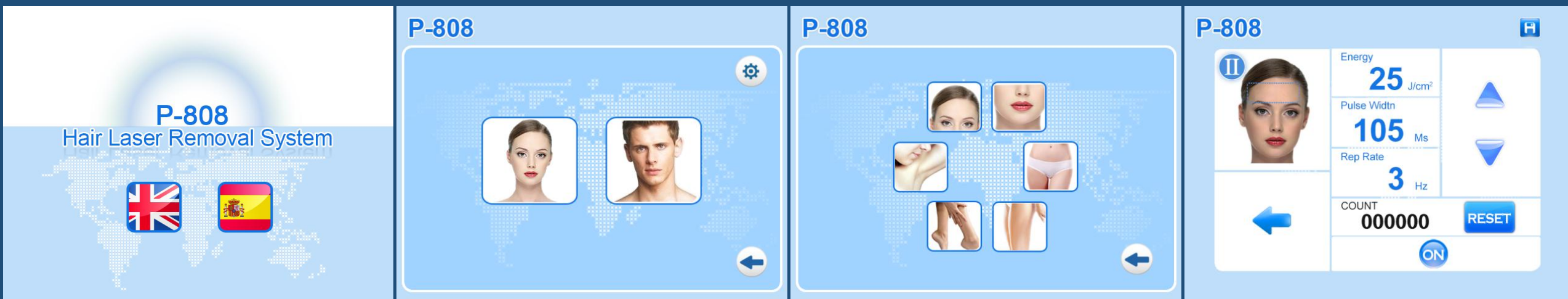


Normal Hair Follicle



Instant Hair Follicle after Treatment

Operator interface



1. Touch screen is the main operation and display part of the hair removal system.
2. Adopting the blue and white color, the interface is concise, readable and considerate.
3. According to the ergonomics, the operator interface is designed separately for both male and female.
4. Through the touch screen, you can achieve the functions include shutdown, laser parameter settings and ready and use the laser.
5. You could only do the parameter setting, mode switch, refrigerator opening and shutdown during standby mode.

Specifications	
Laser Generator Power	600W/800W
Machine Type:	P-808
Laser Type:	Semiconductor laser
Laser wavelength	808nm
Sapphire size:	12*12mm / 12*23mm
Energy Density:	10~120j/cm2 （continuous adjustable）
Pulse width:	20~1200ms(continuous adjustable)
Repetition frequency:	0.5~10HZ
Cooling way:	sealed inner circled water cooling system,
Treatment head temperature	0~5℃
Power rating:	2200w
Power supply:	110V±20%, 50Hz, 10A single phase; ~220V±20%, 50Hz,10A
Security Classification:	I class、BF type
Weight:	70 kg
External dimensions:	460mm×325mm×1150mm (length*width*height)

Technical advantages

- High Energy Output: Make sure good effective for any coloring matter -----120J
- Long Pulse Width: Make sure heating hair follicle, lasting hair removal-----1200ms
- Big Spot Size: Fast and Effective Results -----12*12 / 12*23mm
- Strong Cooling: Instance cooling skin, safe and comfortable -----5°C
- Fast Speed: slide treatment to make it safety and convenience-----10HZ

System Applications

- Treat all kind of hair color from black hair to white hair;
- Treat all skin types from white to dark skin;
- No pain and shorter treatment sessions ;
- Effective and safe treatment for permanent hair removal;



System advantages

The basic theory of Diode Laser Hair Removal Machine is the biological effect. The machine emits the 808nm laser which could be absorbed easily by the pigment located in hair follicle while won't damage the normal surrounding epidermis. The light energy is absorbed by the pigment in the hair shaft and follicle then it is transformed into heat energy, thereby it rises the temperature of follicle, till the temperature is high enough, the follicle structure is destroyed irreversible, the destroyed follicle will be removed after a period of natural physical process, thus achieve the permanent hair removal purpose.

"Safety" "Efficacy" "Pain free" "Convenience"

"Permanence hair removal"... ..



System advantages

1. The best laser wavelength

The 808nm near infrared laser of P-808 Hair Removal System is best for absorbing melanin so that can effect in different parts and hair follicle and reach to removing any hair effectively. From the diagram, we can see 808nm is best for absorbing melanin and less absorbing others.

2. Long laser pulse width

Laser pulse duration is 10ms to 1200ms adjustable, can do treatment effectively special for different hair and lasting!



System advantages

3. No pigmentation, used for any skin type.

P-808 hair removal system uses penetrate technology and skin absorbs fewer lasers and no pigmentation.

4. Pure Sapphire contact cooling system can make sure that treatment more safe and no hurt to skin.

Pure Sapphire contact cooling system of P-808 hair removal system can make sure that doctor use the maximum energy and can not hurt skin. This kind of cooling system can make sure that no hurt to skin when patients are given more pressure. As reported, the pressure can increase 30%-40% light.



System advantages

5. The big spot size can speedup the treatment speed.

P-808 use 12*12mm or 12*23mm big spot size. It makes sure that when do large area hair removal and prompt treatment speed and efficiency. Because of big spot size, it can escape from repeated treatment for hair area.

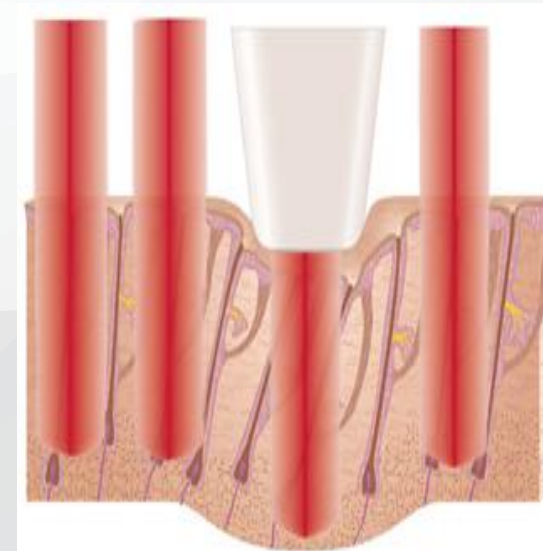
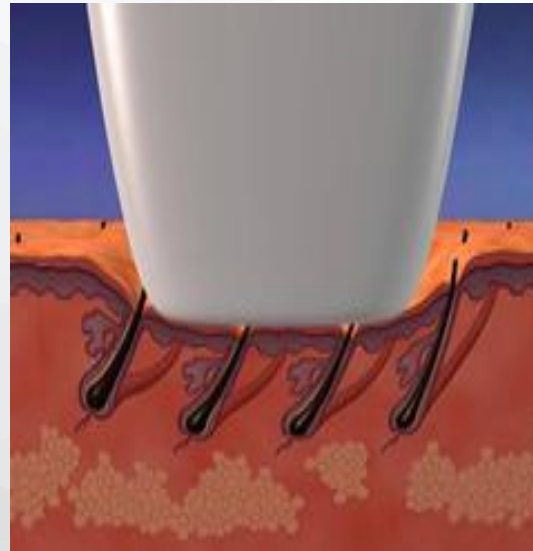
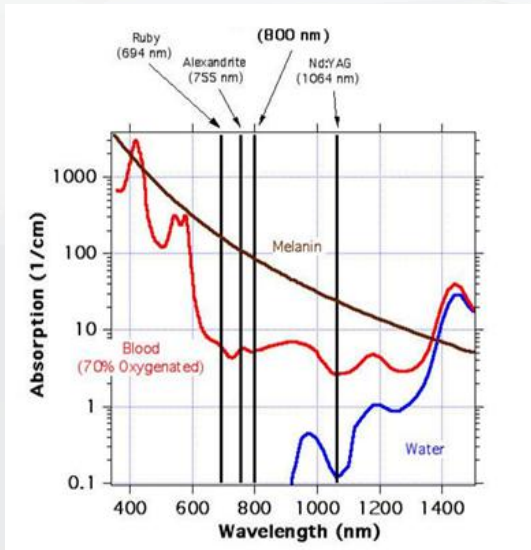
6. Super big true color touch screen make the operation more easy

10.4 inch multi color touch screen, you can choose man or woman , skin color and treatment areas,very easy to operate !



System advantages

7. The power module design is suitable for import and export business. It is convenient to maintenance.
8. Just like the picture show below



Before and After Treatment





Established in 2005, Beijing sano Beauty S & T Co., Ltd takes the leading in applying advanced laser and Intense light technology in medical and beauty industry.

Now we developed Mona IPL series, E-light, Co2 fractional laser, 808nm diode laser, ultrasonic cavitations, fractional RF and hair re-growth laser.

With efficient R & D team, mass production ability and reliable quality control system, Beijing Sanhe Beauty supplies the OEM & ODM service and help our clients build up their own reputation and more competitive in the market.

All the process of the producing is under ISO13485 Quality system and match with CE certification request.

Beijing Sanhe Beauty will work hard constantly for supplying best product and after sale service.

Real Picture of Beijing Sanhe Beauty S & T Co.,Ltd

THANKS

Welcome to consult more!

www.sanolasers.com

Address: 2nd floor, Building No.7, Maohuagongchang, Nancaizhen, Shunyi District,

BeijingTel: 86-15321516360, 0086-69406118

Email: alex@sanhebeauty.net

